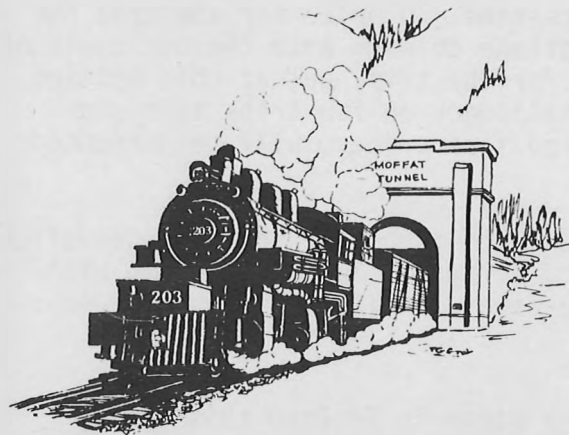


# Rocky Mountain Rail Report



## The Rocky Mountain Railroad Club

P.O. Box 2391      Denver, Colorado 80201  
March, 1981      No. 258

CURRENT NEWS AND HISTORICAL NOTES OF  
ROCKY MOUNTAIN RAILROADING PUBLISHED  
MONTHLY FOR ITS MEMBERS BY THE ROCKY  
MOUNTAIN RAILROAD CLUB

Editor ----- Neal A. Reich  
Contributing Editor --- Darrell T. Arndt

MEETING NOTICE:    Date - - Tuesday, March 10, 1981  
                                  Time - - 7:45 P.M.  
                                  Place - - Southeast wing of Christ Episcopal Church, 2900 South University at Bates. Off-street parking at rear (east) of meeting hall. Please use building's south entrance.

PROGRAM NOTES:                                    OTTO PERRY MOVIES

The incomparable photographic talents of Otto Perry will be on display at the March meeting of the Rocky Mountain Railroad Club. A program of 2,000' of 16mm moving pictures from the club's Otto Perry collection will be presented, with the steam locomotive as the star of the show. Of special interest will be a showing of the first reel of movies ever taken by Otto Perry. This 1941 film includes scenes from the D&RGW narrow gauge on the Santa Fe Branch, on Combres Pass, and around Silverton. Other railroads represented in this reel are the Rio Grande Southern, Rock Island, Missouri Pacific, Colorado & Southern, and a remarkable look at the early days of the big Union Pacific articulated locomotives around Green River, Wyoming.

\* \* \* \* \*

The first really cold blast of the winter kept lots of folks at home on the evening of the February club meeting. However, the small turnout of the faithful on hand enjoyed a look at the status of a light rail commuter system for the Denver area. Rick Pilgrim of the Regional Transportation District, gave a slide presentation on the progress and problems that lie ahead for public transportation. A spirited question and answer session followed, with most of the comment concerning financing the proposed rail corridors.

\* \* \* \* \*

IF YOU DID NOT RECEIVE your 1981 membership card with the February issue of the Rocky Mountain Rail Report, it was probably because your 1981 dues have not been paid. This is the last reminder that delinquent members will be dropped from the club's membership rolls in April. Also, distributed with the February newsletter, was the first "freebie" of the year, a combination pocket calendar, speed computer, and schedule of events for the 1981 club year. And, during 1981, an up-to-date membership roster and a book to be published by the Rocky Mountain Railroad Club will be furnished each member in good standing at no charge. So don't delay, get that \$12 in the mail today! P.S. Ardie Schoeninger would like to thank those who came over and helped sort the dues cards and envelopes, and stuff the newsletters, membership cards, reminders and calendars, after Bob Griswold addressed the envelopes. Quite a chore for one evening.

\* \* \* \* \*

THE TRIP COMMITTEE REPORTS that the Union Pacific Railroad has agreed to run an excursion for the club, from Denver to Sterling, on Saturday, July 11, 1981. The train is to be pulled by UP Steam Locomotive 8444, and at this time, no price for the trip has been quoted by the railroad. Ed Gerlits will continue to work with the officials of the Union Pacific in an effort to secure UP 3985 for the trip, but at this writing, the railroad has announced no plans to run the Challenger on fan trips this year. Details on the Denver-Sterling excursion, including fare prices, will be announced as soon as possible.

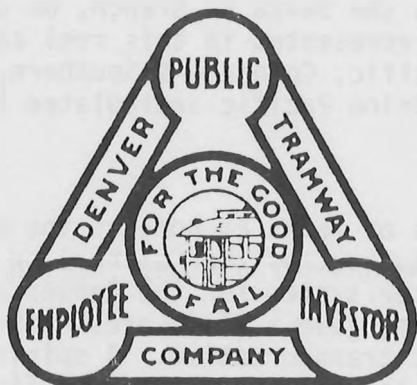
While proclaiming the trip a sell-out, Dick Lawrence continued to accept reservations for the club's February 21 and 22 trip to Glenwood Springs. Now, 123 people will make the popular weekend trek, via the Rio Grande Zephyr, which is becoming something of a tradition as a winter "get-away."

\* \* \* \* \*

STEAM IN EL PASO??? - There are hopes and plans to have steam in El Paso this coming summer, reports Mike Blecha. The El Paso Historical Railroad project is to move Southern Pacific Steam Locomotive 3420 from her display in front of El Paso's railroad depot, where she has been for 24 years, and have her repaired to working condition by May 19, 1981. That date is the 100th anniversary of Southern Pacific tracks reaching El Paso from the west. If all goes well and all of the red tape can be taken care of, the intention is to run short trips from El Paso to Las Cruces, New Mexico. If that proposal falls through, Fort Bliss authorities have already given assurances that the train will be allowed to use the tracks to and inside the post. Mike mentions that, for those of you who are too young to remember, the club's most recent ex-president spent a couple of years at Fort Bliss, and he should remember several good picture-taking spots.

If anyone who might be in El Paso in May or June of 1981, would like more information on this project, contact: Daniel A. Catania, 3937 Libra St., El Paso, Texas 79904, home phone: 751-8374.

\* \* \* \* \*



#### GHOSTS OF THE PAST!!!

*If tracks could "blink," these certainly would have, when unearthed recently during construction work related to Denver's 16th St. Mall project. The view is looking east along Colfax at Broadway, with the capitol in the background. The 3' 6" tracks (the second one is at the far right) are those of the Denver Tramway, whose lines were abandoned some thirty years ago. Sigh!*



A DOFF OF THE CONDUCTOR'S HAT TO Don McDermott for thinking of the club when the need arose to dispose of some surplus hardware. His recent donation of paint brushes,

nuts and bolts, steel stock, paint and tools will certainly be put to good use as our work on the club's equipment continues out at the museum.

\* \* \* \* \*

NOW AVAILABLE FROM THE DENVER PUBLIC LIBRARY is Volume 2 of the "Catalogue of the Otto C. Perry Memorial Collection of Railroad Photographs." The 327-page book contains a listing of Perry photographs of subject matter from the letters "E" through "W". The 8½" x 11" book has over 9,000 entries and 41 photographs, and is priced at \$6.50 per copy, plus \$2.00 for handling and postage. Orders or inquiries should be sent to: Denver Public Library, Western History Department, 1357 Broadway, Denver, Colorado 80203.

\* \* \* \* \*

ARE YOU TIRED OF THE SAME OLD TRAIN RIDES between Durango and Silverton? Or even to Glenwood Springs or Salt Lake City, or even to New York or San Francisco? If so, a Pennsylvania travel agency can now offer you a real get-away-from-it-all rail tour called the Central Kingdom Express. For only \$4,850, you can enjoy 42 days riding 9,331 miles from London to Hong Kong, via Paris, Berlin, Warsaw and Moscow. The price includes air transportation back to London, plus sleeping-car accommodations, hotels in stopover cities, all meals, sightseeing, and a tour guide. So toss the old Instamatic and some clean socks into your grip, take along four or five hundred dollars for incidentals, and head for the trip of a lifetime.

\* \* \* \* \*

A WATER TANK FROM THE DENVER & RIO GRANDE RAILROAD'S BLUE RIVER BRANCH now rests in the Colorado mountains near Boulder, where it has been converted into a unique summer home. Moved from near Silverthorne, the tank's exterior woodwork remains almost intact, with windows, a balcony, and two skylights in the roof, altering its original appearance. A bedroom has been built beneath the water compartment of the structure, with the bathroom, living room and kitchen utilizing the three-inch thick mahogany floor of the tank itself. The levels above this area contain the master bedroom, sleeping loft and den. Access to the house is via an outside wrought iron spiral staircase to the living room, or by way of another staircase that spirals its way 32' from the ground through the center of the structure.

\* \* \* \* \*

CALIFORNIA GOVERNOR, JERRY BROWN, recently authorized \$300,000 for a study into the feasibility of building a network of 150 MPH rail lines similar to those now in operation in Japan and Europe. Soaring gasoline and auto prices have spurred action seeking energy-efficient modes of public transportation in the state where the car is king. There are several successful rail corridors now in operation in California, including the Los Angeles-San Diego route, as well as the Los Angeles to Las Vegas and the San Jose to Reno runs. Meanwhile, in Orange County, a 24-mile rapid transit commuter rail line has been proposed. Built on a former Pacific Electric right-of-way, this Santa Ana to Beach Blvd. line could be in service by 1988, officials say. Other elements in the Orange County total transportation improvement package call for the widening of freeways and better Amtrak commuter rail service.

\* \* \* \* \*

THE 1981 AMTRAK CALENDAR, featuring a montage-like rendering of the Los Angeles Union Passenger Terminal, is still available to the public. The calendar painting, by Gil Reid, depicts two Amtrak trains, an Amfleet-equipped consist and a Superliner-equipped long-distance train posed in front of the tan stucco structure. The scene includes 3 area buses, plus a panoramic view of the Mexican area directly across

Alameda St., where the city of Los Angeles was founded in 1781. Copies of the calendar may be obtained at \$5 each, from: Amtrak Calendar, Department AN, Western Folder, P.O. Box 311, Addison, Illinois 60101.

\* \* \* \* \*

SWAP 'N SHOP - Personal ads are accepted from club members for items to be listed for sale or trade, or wanted. We cannot enter into any correspondence, nor will we appraise items. Listings are on a space available basis only.

FOR SALE: To the highest bidder, Copy #122 of the Timberline Edition of "Rio Grande Mainline of the Rockies" by Lucius Beebe and Charles Clegg, 1962. The book is in fine condition and autographed by the authors.  
E. J. HALEY, 4116 Decatur St., Denver, Colorado 80211.

FOR SALE: D&RGW/RGI Annual Reports, 1947-1970 complete - \$50 postpaid. D&RGW HO brass models, custom paint (2) K27, (3) C21, lettered Crystal River. (1) C25 not painted.

EXCHANGE: 1919 Locomotive Cyclopedia in excellent condition for certain brass HO models. Inquire.  
ROBERT A. LE MASSENA, 1795 S. Sheridan Blvd., Denver, CO 80226.

WANTED: Photographs and information on the Colorado Eastern Railroad. Bob Griswold and John Newell are working on a history of this very obscure Colorado narrow gauge railroad. Anyone having any photos or information that might add to the story are urged to contact them.  
BOB GRISWOLD, 2700 S. Kearney St., Denver, CO 80222. Phone: (303) 756-7814.

WANTED: 8"x10" photograph of Union Pacific Railroad Big Boy Locomotive #4005.  
ERNEST M. SIMMERMAN, 218 Congressional Lane, Apt. 103, Rockville, Md. 20852.

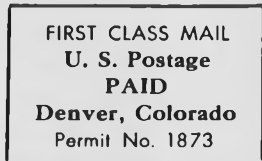
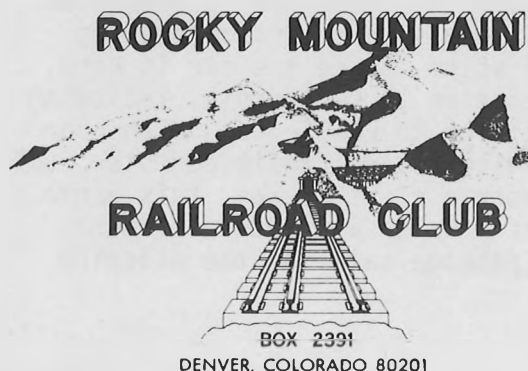
\* \* \* \* \*

JIM RANNIGER, President

BILL GORDON. Secretary

ERWIN CHAIM, Vice President

ARDIE SCHOENINGER, Treasurer



Chuck Powell  
P. O. Box 2670  
Pasadena, CA 91105

FIRST CLASS MAIL