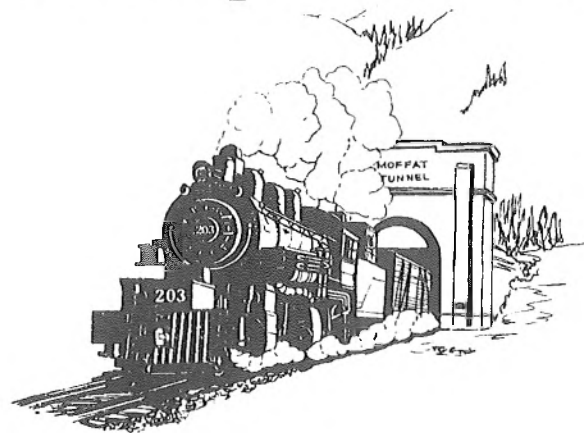


Rocky Mountain Rail Report



The Rocky Mountain Railroad Club

P.O. Box 2391 Denver, Colorado 80201

July, 1978 No. 226

CURRENT NEWS AND HISTORICAL NOTES OF
ROCKY MOUNTAIN RAILROADING PUBLISHED
MONTHLY FOR ITS MEMBERS BY THE ROCKY
MOUNTAIN RAILROAD CLUB

Editor - - - Darrell T. Arndt

MEETING NOTICE: Date . . Tuesday, July 11, 1978
Time . . 7:45 P.M.
Place . . Southeast wing of Christ Episcopal Church, 2900 So.
University at Bates; off-street parking at rear (east)
of meeting hall. Use west doors to enter hall.

PROGRAM NOTES:

YARD WIDE RAILS is a compilation of 16mm silent film footage taken by Stan McGuire of Campbell, California, a retired Southern Pacific Railroad conductor. This color film records the D&RGW's narrow gauge operation in the closing years. The film will be presented by Michael Rowe.

As could have been predicted, Ron Ruhoff didn't disappoint a soul at the June meeting with his "double headed" 16 mm programs "A C&S-GW EXCURSION" and "A DAY IN THE LIFE OF 641." The full day's activities with a Rocky Mountain Railroad Club steam excursion north from Denver on the C&S and the GW was depicted from the moment the engine pulled out of the roundhouse in Denver until it disappeared into the twilight in an outstanding sunset scene at the end of the day. The sole C&S steam locomotive at Leadville was shown in the second program as it began its daily routine of making up a train in Leadville under a backdrop of snow-covered mountain peaks. With its consist assembled, the train climbed along the mountainside to Climax. After completing its chores at the highest point reached in the U.S. by an adhesion railroad, it turned around and returned to Leadville at the end of the same day. Both movies were accompanied by symphonic music, expertly coordinated to enhance the moods of the various sequences. Our thanks to Ron for presenting his record of some memorable Colorado railroad history.

* * * * *

MOTHER NATURE COOPERATED FULLY on Saturday, June 17, and assisted in providing a pleasant trip to the Cripple Creek Mining District. First stop on the day's outing was at Waters Tunnel, where there was some needless apprehension that the bus might not fit. However, it made it through with all of its paint

still in the right places. Upon arrival at the Mollie Kathleen mine, mostly everyone looked forward to going down the 1,000' shaft (or pretended to look forward to it). The trip in the cage wasn't exactly like riding the roomy elevator to Denver's popular "Top of the Rockies" restaurant, but it sure beat using the ladder. The tour through the bottom level was quite educational and interesting. Next stop was downtown Cripple Creek, where there was time for lunch before a ride on the Cripple Creek & Victor Railroad. During the ride, we saw the new wye that was just being finished at the end of the line, and John Birmingham added an open car for the group and provided a great photo runby out on the line. With points of interest being pointed out over the bus P.A. system, we proceeded to Victor and stopped at the Midland Terminal depot, where owner Jim Stitzel along with Beyer Patton graciously welcomed the group and allowed everyone to visit inside. A group picture was taken in front of the building similar to the way it was done nearly 30 years ago when the railroad's last passenger train sponsored by the club, stopped in Victor. During the day's trip, we enjoyed the company of Peter Berger, a somewhat distant member, with his wife and little girl who were visiting from Switzerland. We then walked down to the Alta Vista station, the ex-F&CC depot that was recently moved from south of town and is now used as a visitor center. Proceeding north past Goldfield and Independence, we stopped briefly at Bull Hill, then on to Gillette over the old grade and on to Colorado Springs and the Flying W. Ranch. Subsequent to looking around the grounds and visiting the shops and displays, the famous Flying W dinner was enjoyed in the outdoor eating area. With a full moon peeking through the clouds and an occasional flash of lightning through the trees near the horizon, a very good western music program was enjoyed by all. Return to Denver was made shortly after 11:00 P.M.

* * * * *

AUGUST HIKE - Saturday, August 26 is the date of the club's hike up the switchbacks of the Argentine Central Railroad above Silver Plume. A cinderburger cookout will await the hikers at the upper end of this relatively easy walk. More details in the August issue.

* * * * *

THE UNION PACIFIC 8444 trip on August 12 is about half sold out.

* * * * *

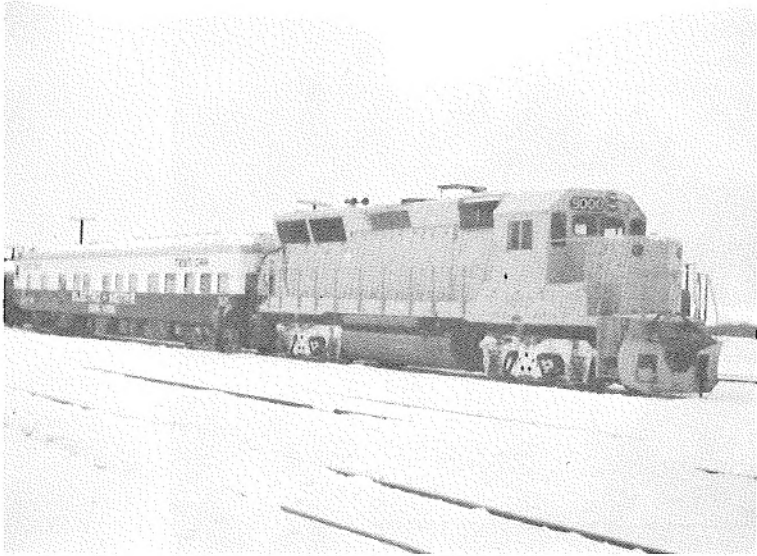
DON'T FORGET RAILFAIR at the Jefferson County Fairgrounds, July 8 and 9. Bigger and better than last year, there will be numerous exhibits, programs and other rail oriented attractions guaranteed to interest even the non-rail enthusiast. Donations are \$1.00 for adults, 50¢ for children under 12. Hours will be 10:00 to 7:00 on Saturday and 10:00 to 4:00 on Sunday.

* * * * *

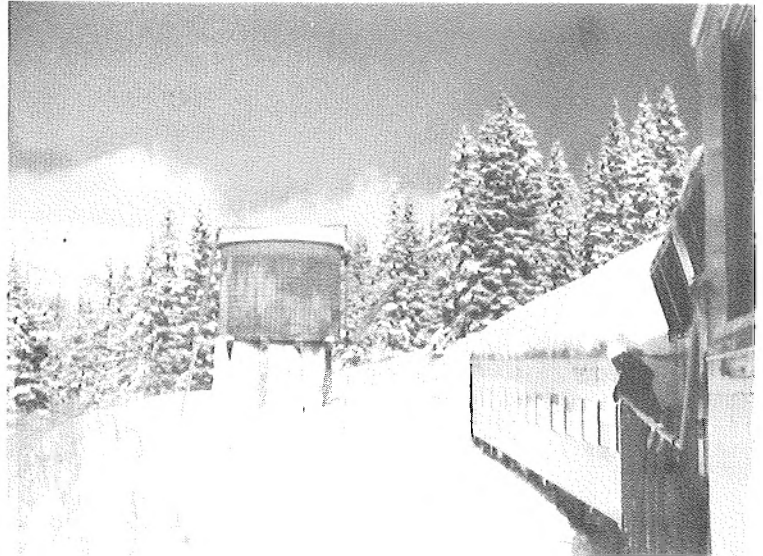
BROCHURES WERE INCLUDED in last month's newsletter on the club's Utah trip on Sept. 8, 9, and 10. Three great days of riding trains with plenty of fun and relaxation. Send your \$25.00 deposit soon!!!

* * * * *

Although Rocky Mountain railroading isn't nearly as exciting and colorful as it used to be, even as it was only a few years ago, once in a "blue moon" we are reminded that all is not lost, that we can still expect the unexpected and even step back in time for a moment. Our area photographers have captured a few of these moments on film, and so we thought we'd share them with you. Could these photos, perhaps, be entitled "Would you Believe?""???



Tom Fisher



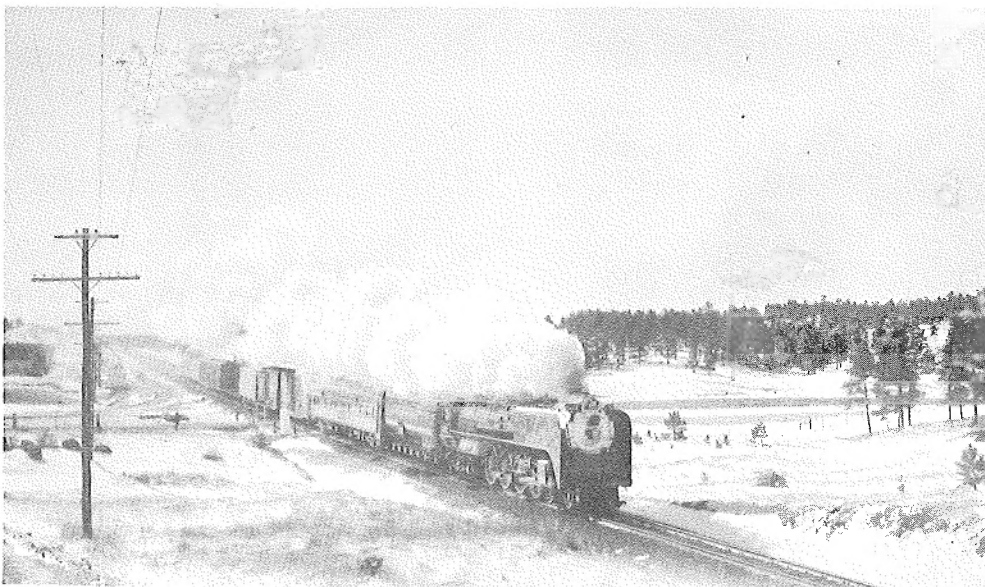
William R. May

GP 40X No. 90000 with EMD Test Car at Malta, Colorado prior to movement to Climax, Colorado for high altitude testing. After leaving Climax on the Leadville - Climax branch, the train passes French Gulch Tank. A remnant of the days of steam, the tank still holds water after all these years. February, 1978.

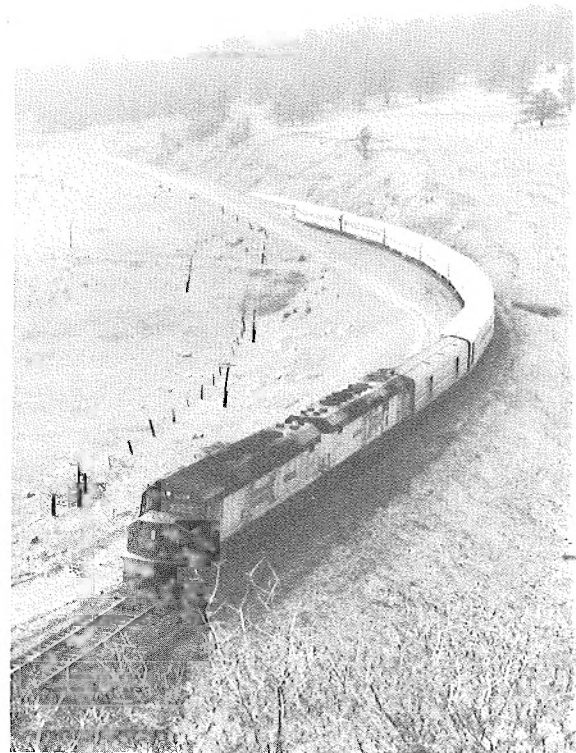
Amtrak's San Francisco Zephyr is re-routed westbound over the D&RGW due to a derailment on the U.P. Coal Creek Canyon, April 15, 1978.



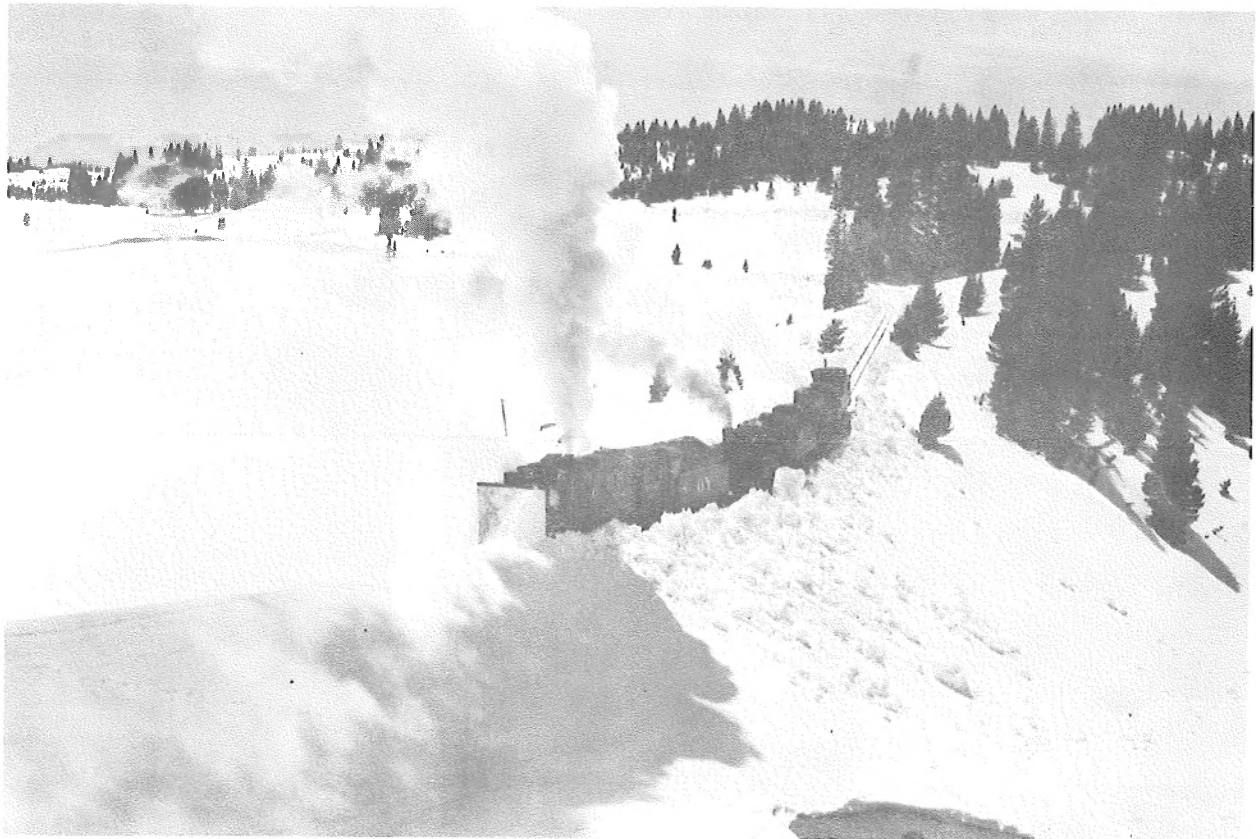
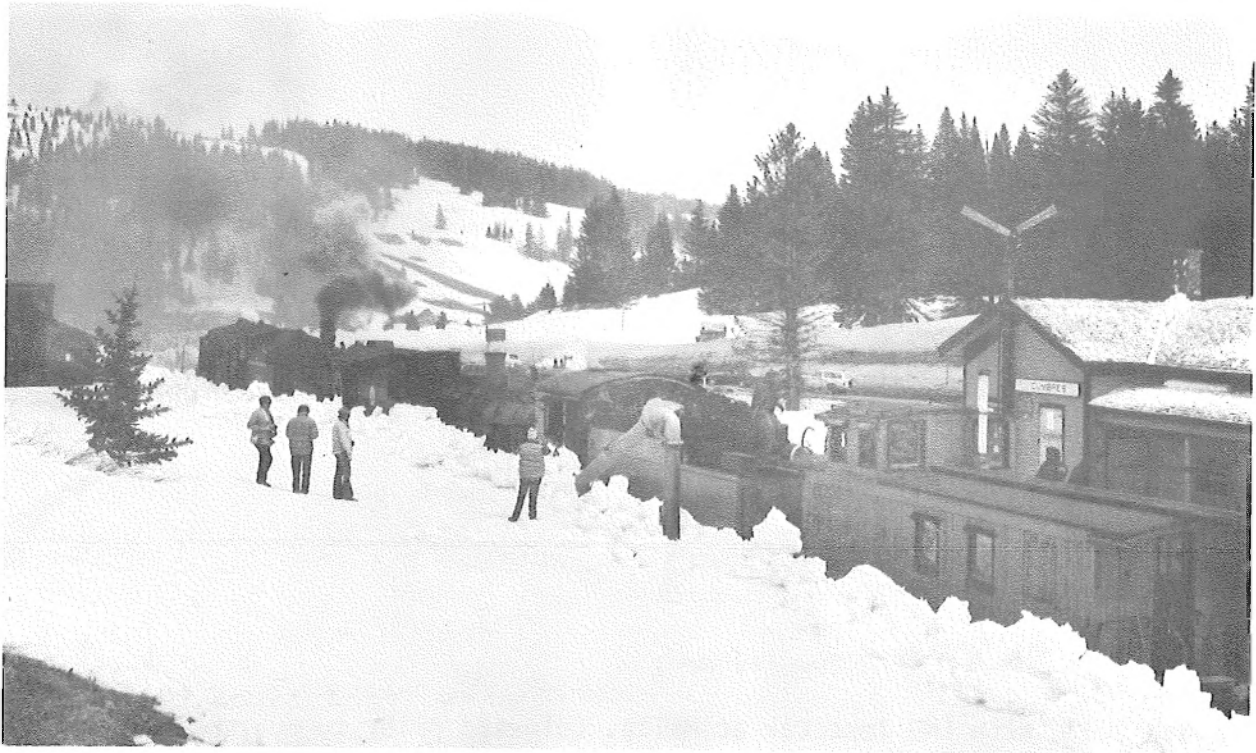
Union Pacific 8444 rolls west to Idaho with a display train for "Transportation Week." Harriman, Wyoming, May 12, 1978.



Richard Kindig



George Lawrence



George Lawrence

Cumbres & Toltec Scenic Railway Rotary Plow 0Y and Engines 487 and 484 open the Chama-Antonito narrow gauge line during a four-day period beginning on April 21, 1978, to allow movement of other equipment from Chama to the Antonito area for the filming of a motion picture sequence. Here the train pauses at Cumbres Pass before continuing on down around Tanglefoot Curve, where snow and steam made a spectacular sight.

D&RGW NARROW GAUGE STEAM ENGINE NO. 476 misbehaved on June 8, and sat herself on the ties after splitting the switch on the last curve coming into Silverton with the second section. As a result, both trains were unable to leave and passengers had to be bussed back to Durango. Railroad crews worked all night to rerail the engine, first attempting to pull it back through the switch with the third engine that came up from Durango. The engine finally had to be jacked up. The third engine left with the second section Tuesday evening, and the first section left Wednesday morning empty. Both trains ran several hours late on Wednesday.

* * * * *

THE MILL GULCH BRIDGE in the Platte Canyon, is now being dismantled with each piece being marked so it can be reassembled at another location. The canyon is now closed to all foot traffic during widening of portions of the old roadbed by the Denver Water Department. The bridge was a highlight on the club's trip through the canyon last year. The bridge is reportedly to be reconstructed near the Keystone Ski area on the west side of Loveland Pass.

* * * * *

SHE ROLLS AGAIN - After much work by museum crews, Engine 318 felt a fire in her firebox again at the Colorado Railroad Museum and operated at the end of May for the first time in some 25 years.

* * * * *

SAN LOUIS VALLEY SOUTHERN FIELD TRIP - On Saturday, July 22, the San Louis Valley Historical Society will sponsor a field trip over the right-of-way of the San Louis Valley Southern from Blanca to the Colorado-New Mexico border area. The motorcade trip will depart the Blanca depot at 9:30 A.M., and proceed south to San Acacio, Mesita and Jaroso. From Jaroso, the trip will probably continue to Contilla and return to Blanca by way of the Sanchez Reservoir. Some traces of the railroad still remain, such as the soon-to-be-replaced Rattlesnake trestle and the depot at San Acacio. Participants should bring a lunch. For further information, contact Bob Oringdulph, P.O. Box 24, Blanca, CO 81123.

* * * * *

WHOA!! - A new ordinance recently passed in Rock Springs, Wyoming, restricts all Union Pacific trains passing through the city to 40 m.p.h. Concern of the possibility of a derailment within the community was the primary reason.

* * * * *

CAN YOU IMAGINE!?!? - An auto manufacturer has had the absolute gall to name one of its new car models the "Zephyr." Suppose it won't be too long before a newcomer to rail travel aboard the Rio Grande Zephyr will be overheard exclaiming "Oh, this train must be named after that new automobile." For passenger train buffs, this is going to be a hard pill to swallow. NOW, if the auto had fluted sides !!!

* * * * *

- - DATES TO REMEMBER - -

AUGUST 12, 8444 Steam Excursion to Laramie, Wyoming - August 26, Argentine Central Hike - - - Sept. 8, 9, and 10, Utah Fall Spectacular trip - - - October - Cog Railway - - - October 14, Annual Banquet.

* * * * *

10 YEARS AGO IN THE ROCKY MOUNTAIN RAIL REPORT

The coming Union Pacific Steam Excursion will be the club's 85th train or trolley trip . . . The 6,000 volume edition of COLORADO MIDLAND has been sold out.

AND 15 YEARS AGO . . .

A special steam powered excursion behind CB&Q No. 4960 was taken to Colorado Springs for the Silver Anniversary Banquet at the Antlers Hotel ... The Manitou & Pikes Peak Railway will add two new Swiss built diesel-electric rail cars to its railroad ... Krauss-Maffei diesel-hydraulic unit 4001 rejoined the ranks of active units on the D&RGW after several months of modifications.

* * * * *

SWAP'N SHOP - Personal ads are accepted from members for items to be listed for sale or trade or wanted. We cannot enter into any correspondence, nor will we appraise items.

WANTED: Five RAILFAN magazines: Winter, 1974, Spring, Summer, Fall & Winter 1975 issues.
R. JAY PIERCE, JR., 10612 Toledo Bend Ave., Baton Rouge, LA 70814

FOR SALE: To raise the needed \$\$\$ for a trip to Colorado!! Many railroad books, most of them on narrow gauge lines, and some others, all at 25% to 35% off the list price, and all in good or "gooder" condition. In On3 model railroad stuff, I have a Kemtron modern C-16 kit, complete with some casting cleanup and filing already done (\$175 ppd.); a bunch of Grandt Line On3 parts, and a few others, most of them for a D&RGW 17' body short caboose, plus some other miscellanea, all 25% off list price. In HO, The Structure Co.'s kit of the Mt. Princeton station will be sent postpaid for \$8.65. Also, a few timetable reprints (at 25% off), and several back issues of the Narrow Gauge & Shortline Gazette. Send long SSAE for either list (model stuff or books, timetables, Gazettes), or send 28¢ LSSAE for both lists.
GEORGE E. PITCHARD, P.O. Box 576, New Milford, Conn. 06776

JAMES R. TROWBRIDGE, President
ED GERLITS, Vice-President

BILL GORDON, Secretary
ARDIE SCHOENINGER, Treasurer



FIRST CLASS MAIL
U. S. Postage
PAID
Denver, Colorado
Permit No. 1873

Chuck Powell
960 Brontrnal Rd.
Pasadena, Calif.
91105

FIRST CLASS MAIL