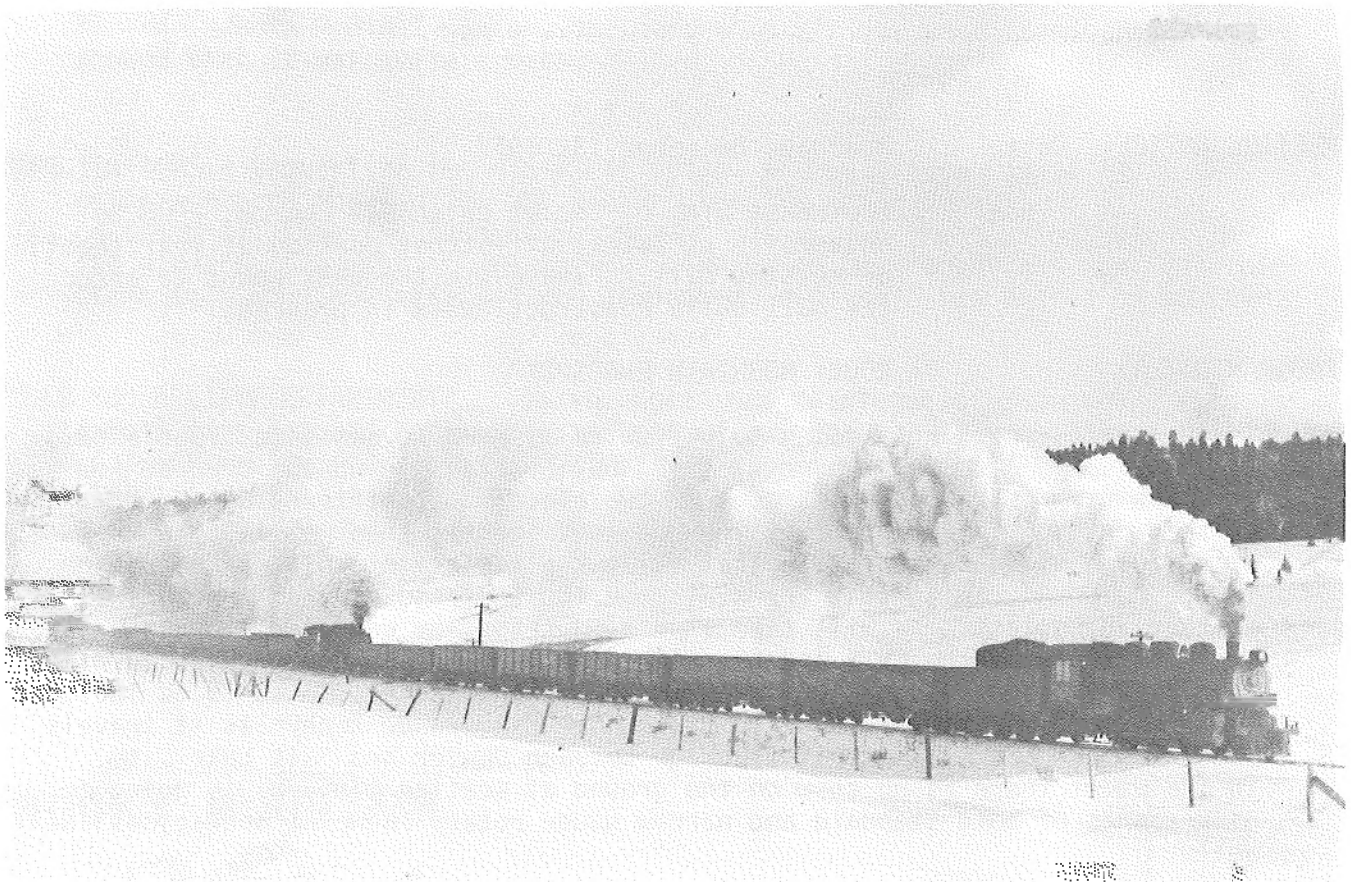


those of us who have ridden the Club's trips on the Hill City - Deadwood line. To know the extent of rail operations as they are now, and then to become aware of how extensive and important rail operations used to be in that area, certainly can leave quite an impression. A number of maps and numerous photographs taken over the years were used to illustrate how the various railroad facilities have changed and how the rails used to cover the hills around Lead and Deadwood. Our thanks to Dave for a very informative evening.

Also, at the last meeting we had the pleasure of viewing two original paintings, one by Howard Fogg, that were commissioned for use in a new publication about to become available, entitled "STAIRWAY TO THE STARS" by Dan Abbott. The work will cover the Argentine Central Railway, whose rails once climbed out of Silver Plume to over 13,000 feet above sea level.

* * * * *



Three Midland Terminal engines, No's, 65, 66, and 64, (2-6-0's) roll down-grade with 21 cars through a snowy landscape near Divide, Colorado. Dick Kindig captured this moment on film shortly after noon on February 5, 1949.

SEASON'S GREETINGS are extended to each and every one of our members with the wish that the coming year will be the best one yet. The newsletter editor would like to thank everyone who has helped with the newsletter, and to all who have provided information to be shared with all of us. News items about railroad events, particularly in the Rocky Mountain Region, are always welcome, of course.

* * * * *

RAIL ENTHUSIASTS from 12 states and two provinces of Canada are among those already signed up for a 16-day Midwest Travel Service RAILFAN FUN-TRAIN scheduled for January 20 to February 4, 1978, according to Howard B. Thornton, who will personally escort the tour. All travel in Mexico will be by special train and cover 5,748 kilometers of the National Railways of Mexico and the United of Sureste Railroad. Midwest Travel's two private cars, the "Mistletoe" and the "Soonerland" (with its open rear platform and track lights), will be used for all travel in Mexico. Other lightweight sleeping cars, formerly on U. S. railroads, will be furnished by the N de M. Highlights will include traveling over the former Mexican Electric Railroad with its 4.1% grades, all the rail and light rail around Mexico City, the Texas Transportation Company with its two electric loco's in San Antonio, the narrow gauge line at Merida and a chance to ride a locomotive. Mr. Thornton, a member of the Rocky Mountain Railroad Club and Director of Midwest Travel Service, will be making his 40th trip to Mexico on this railfan oriented tour. A limited amount of space is still available. For further info, write or call at 2936 Bella Vista, Midwest City, Oklahoma, 73110 - Phone (405) 732-0566.

* * * * *

SWAP'N SHOP - Personal ads are accepted from members for items to be listed for sale or trade or wanted. We cannot enter into any coorespondence, nor appraise items.

WANTED: Copy of LITTLE ENGINES AND BIG MEN by Gilbert A. Lathrop.
JOHN A. MILLIGAN, 14416 Eggleston Avenue, Riverdale, Ill. 60627

FOR SALE: RAILS AROUND GOLD HILL by Morris Cafky, 1955. Will sell to highest bidder over \$150, a mint condition copy of this rare book, still in its sealed container, the unopened shipping box.
EDWARD W. CALLENDER, 2204 Ingalls Street, Denver, CO 80214

FOR SALE: Timetables: D&RGW, Winter 1931; D&RGW-WP, September, 1927; Santa Fe, March, 1914; Union Pacific System includes UP RR Co. Oregon Short Line, Oregon-Washington RR & Nav. Co, Los Angeles and Salt Lake RR Co., Nov. 1930. Your choice, \$12.50 each postpaid, insured.
Books: END OF TRACK, a novel about Julesberg, CO and the UP railroad. \$10.00. SIERRA RAILWAY-MOTHER LODE REGION, CALIFORNIA. \$12.50, postpaid. TRAVELERS OFFICIAL RAILWAY GUIDE (reprint), June, 1868. \$6.00 postpaid. PACIFIC TOURIST GUIDE ACROSS THE CONTINENT, 1882-83. \$38.00 postpaid.
F. B. RIZZARI, 1716 Viewpoint Rd., Denver, Colorado 80215.

WANTED: C&S Annual Pass for 1901. Have C&S for 1904-05-07 to swap. Want Colorado Midland Annuals for 1894, 1897, and before 1890. Have 1907 & 1909 to swap plus cash for above.
PHIL RONFOR, 158 Spring Street, Santa Cruz, California 95060.

FOR TRADE- WANTED: Have RGS conductor badge, will trade for C.M. Ry. or other narrow gauge badge. I will buy railroad hats and badges.
TOM SAVIO, Box 3550, Pasadena, California 91103.

FOR SALE: RAILS AROUND GOLD HILL by Morris Cafky, published 1955. No. 1868. Complete with all maps. Excellent condition. \$200.00.
W. HOFFMAN, 230 Chinook Drive, Placentia, California 92670.

* * * * *

FORGOT TO MENTION that one of the long-distance champions at the October banquet was our old friend, Walt Steenstra from Gilmanton, New Hampshire, who came out for a couple of days to attend the meeting.

* * * * *

IN COMPLIANCE with the Club's bylaws, the December newsletter is being mailed ten days prior to the December meeting, the meeting at which election of officers for the coming year are to be held.

* * * * *

ONLY ELBOW ROOM - By the time this RAIL REPORT hits the mailboxes, the Club's 1977 8444 steam excursion on November 26, will be history. Tickets for the trip were sold out on November 4th.

* * * * *

DUES - There has been a respectable return on dues so far, and we thank all who have made prompt payment. If you haven't sent in your \$6.00, why not do it today! . . and don't forget the drawing for the books, "COLORADO MIDLAND" and "PICTORIAL SUPPLEMENT TO DENVER SOUTH PARK & PACIFIC!!"

* * * * *

THE CUMBRES & TOLTEC SCENIC RAILROAD is making preparations for a "Winter Special" to be run out of Chama, N.M., on February 4 and 5, 1978. The railroad intends to operate on that weekend, regardless of the snow conditions. If snow cover is adequate, the rotary will be used and if not, "other" activities will be planned. And, unlike previous years, the reservation of accommodations in Chama will be available only through the railroad. This arrangement has been made between the railroad and the local motels, and evidently will require visitors on that weekend to support the railroad function either through the purchase of tickets or pacer passes. Since accommodations are limited, they suggest early reservations. The Overland Chapter of the NRHS is planning to incorporate that weekend into their visit to the west, and will also accept people in Denver and at the Durango airport if space is available. The railroad is preparing a brochure describing the activities planned, and how to obtain accommodations, and can be obtained by dropping them a line at Box 789, Chama, New Mexico 87520, or by calling (505) 756-2151 M-F 9:00 A.M. to 12:00 P.M.

* * * * *

CORRECTION DEPARTMENT - Last month we mentioned that the old Southern San Luis Valley steam engine No. 105 at Blanca, or what was left of it, was being dismantled and scrapped. Fortunately, that is not entirely true. The engine is not being scrapped, but is being moved in pieces to Antonito to be put on display in a park. The locomotive was originally D&RG No. 596 (renumbered D&RGW No. 688 in 1923), a C-28, 2-8-0 built by Baldwin in 1890. It was sold to the SSLV in June 1945, and operated until the early 50's as No. 105 (with the tender off of No. 106). It then sat at Blanca, rusting away, for about 25 years.

* * * * *

THE BURLINGTON NORTHERN RAILROAD recently completed putting its green, white and black colors on the last locomotive to carry a paint scheme from one of the original roads that make up the merged company.

* * * * *

THE RIO GRANDE SKI TRAIN to Winter Park will begin operations this ski season on January 7, and will run until early April, depending on snow conditions. The \$6.00 adult fare is the same as last year.

* * * * *

DENVER AND RIO GRANDE WESTERN'S narrow gauge Silverton train finished off its best year yet, with a 120,228 passenger count, up from 114,698 last year. The CUMBRES & TOLTEC SCENIC RAILROAD carried approximately 29,500 passengers this year, compared to 25,937 last year.

* * * * *

THE SOUTHWEST LIMITED, traveling toward Chicago from Los Angeles at about 80 mph, hit an abandoned pickup truck straddling the Santa Fe's mainline track between Trinidad and LaJunta, near Delhi, Colorado on November 19. Initial reports indicated that the truck caused the derailment of all four engines and most of the cars in the approximately 16 car consist, the truck not being anywhere near a highway crossing of the tracks. 20 persons out of 180 were treated in the LaJunta Medical Center, one person in serious condition. News photos showed that it was quite a mess.

* * * * *

COMPLICATIONS - Looks like the old DSP&P bridge in the Platte Canyon won't be going anywhere for awhile. No sooner than the Water Department offered it to the City, than the Federal Government put up "No Trespassing" signs on its girders, claiming it was theirs. The Water Department and the Feds both claim that when the railroad was abandoned, ownership was passed on to them.

* * * * *

WOULD YOU BELIEVE DEPARTMENT ... In the Christmas catalogue of Montgomery Ward is a full page devoted to inexpensive pocket watches for sale that have full color railroad emblems on the face. 17 different railroads are available. (But no DSP&P!!! DRAT!)

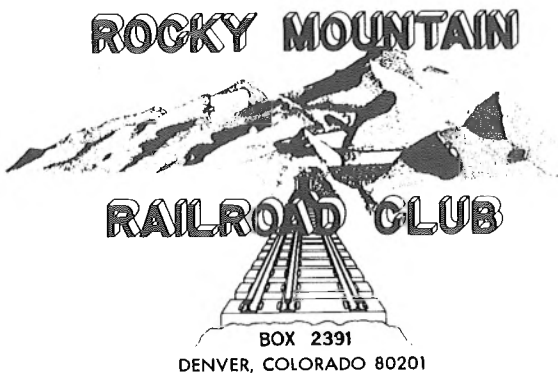
* * * * *

JAMES R. TROWBRIDGE, President

BILL GORDON, Secretary

ED GERLITS, Vice-President

CARL E. C. CARLSON, Treasurer



FIRST CLASS MAIL
U. S. Postage
PAID
Denver, Colorado
Permit No. 1873

Chuck Powell
960 Brentnal Rd.
Pasadena, Calif.
91105

FIRST CLASS MAIL