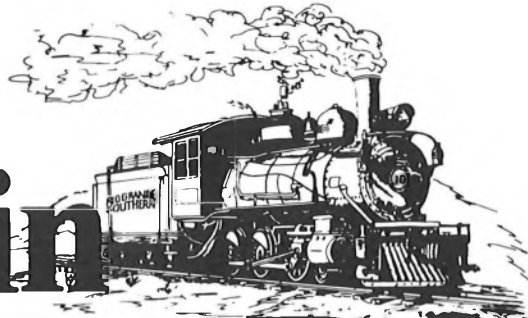


Rocky Mountain RAIL REPORT



THE ROCKY MOUNTAIN RAILROAD CLUB

MEETING SCHEDULE:

March 8, 1988 -- 7:30 p.m.

Southeast wing of Christ Episcopal Church, 2950 South University at Bates. Off-street parking at rear (east) of meeting hall. Please use the building's south entrance.

Jim Trowbridge..... Editor
Les Grenz..... Associate Editor
John Dillavou..... President
Rich Dais..... Vice President
Bill Gordon..... Secretary
Elbert E. Bidwell..... Treasurer

Send all items for publication to: Rocky Mountain Rail Report, c/o Jim Trowbridge, Editor, 502 South Cody Street, Lakewood, Colorado 80226.

COPY DEADLINE -- ALL copy for publication is due no later than the 15th of the month prior to month of publication.

CLUB MEMBERSHIP

Membership in the Rocky Mountain Railroad Club may be obtained by sending \$19.00 (\$15.00 annual dues plus enrollment fee of \$4.00) to: ROCKY MOUNTAIN RAILROAD CLUB, P. O. Box 2391, Denver, Colorado 80201. After April of each year, new members may join for a payment of \$4.00 enrollment fee plus \$1.25 for each month remaining in the calendar year. Dues for the next year are solicited in December of the current year.

March, 1988..... No. 342
Club Telephone..... (303) 431-4354
P. O. Box 2391..... Denver, Colorado 80201

CURRENT NEWS AND HISTORICAL NOTES OF ROCKY MOUNTAIN RAILROADING PUBLISHED MONTHLY FOR ITS MEMBERS BY THE ROCKY MOUNTAIN RAILROAD CLUB.

MEMBERSHIP INQUIRIES

Please refer address changes, new memberships and lost newsletters to:

Tom Lawry, Membership Chairman
c/o Rocky Mountain Railroad Club
P. O. Box 2391
Denver, Colorado 80201

MARCH 8 PROGRAM — POTPOURRI NIGHT

In many respects, the Potpourri night is the best program of the year since it is really made up of fifteen to twenty programs on a vast variety of subjects by as many individual members. You will not want to miss this meeting!

FEBRUARY PROGRAM

We all enjoyed a preview of the field trips during the 50th Anniversary celebration two-week extravaganza this coming June. All aspects of the upcoming field trips were covered through some fine photography by Rich Dais, Ardie Schoeninger, Cyndi Trombly and Zona Stephens. Darlene Edgerton was unable to participate due to

hospitalization. We all wish her well! Our thanks for a fine program.

Bulletin

COPY DEADLINE FOR APRIL NEWSLETTER

Your editor will be out of town the latter part of March and will have to prepare the April newsletter prior to leaving. Therefore, the deadline for the April newsletter will be the night of the March meeting, March 8, 1988. THERE WILL BE NO EXCEPTIONS. Anything coming in after that date will appear in the May newsletter. Your cooperation in this matter is greatly appreciated.

1988 SCHEDULE OF EVENTS

March 26	Winter Park/D&RGW Ski Train
April 16	50th Anniversary Banquet
May 14	Colo. RR Museum Work Day
May 21	Alternate Colo. RR Museum Work Day (in case of bad weather on May 14th)
June 18-), July 2)	50th Anniversary Summer Celebration
June 18	UP 3985 Excursion
June 19	Georgetown Loop RR Trip
June 20	Manitou & Pike's Peak Cog Trip
June 21	Cripple Creek/Victor Excursion Cadillac & Lake City RY Trip
June 23	Cumbres & Toltec Scenic RR Trip
June 24	Chama/Durango Field Trip
June 25	Durango & Silverton NG RR Trip
June 26- July 2	San Juan Mtns. Ghost Railroads Field Trips
Aug. 18	Great Western RR Excursions
Sept. 2-5	Grand Canyon/Flagstaff/Amtrak Excursion
Oct. 15	Paramount Theatre--RMRRRC Night
Dec. 13	Elections

MEMBERSHIP DUES

We are fast approaching the April cut-off when those members who have not renewed will be dropped from the membership rolls. If this happens, you will lose your number and will have to pay the enrollment fee once again should you wish to continue as

a member in the Club. Don't let this happen to you! Renew today, if you have not already done so!!!

If you would still like to participate in the book drawing, you have just one month to send in your book drawing chances. The drawing will be held at the 50th Anniversary Banquet which will take the place of the regular April meeting. A coupon for this drawing is included below. (All monies received from the drawing goes to our Equipment Fund for preservation and restoration of the Club's equipment at the Colorado Railroad Museum).

ROCKY MOUNTAIN RAILROAD CLUB
1988 Book Drawing - April 16, 1988

NAME _____

ADDRESS _____

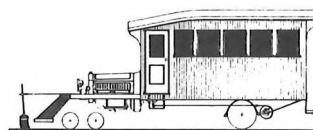
Please Print or Type. Winners need not be present to win.

Chances are \$2.00 each and you may purchase and enter as many chances as you wish. Be sure to fill out a coupon for each chance. You may photocopy the coupon we included in this newsletter.

NEW MEMBERS

The Rocky Mountain Railroad Club wishes to enthusiastically welcome the following new members:

Trevor Doran	Australia
Joseph E. Ellis	Lipan, TX
Vicki Everett	Denver, CO
Richard Fillinger	Denver, CO
Charles Kelly	Kissimmee, FL
Keith Knight	Highlands Ranch, CO
Gary M. Lee	Arvada, CO
George Reed	El Paso, TX
Stephanie Shaw Olsen	Leadville, CO
Larry Tryon	Fort Collins, CO
Watson Warriner	Greenville, DE

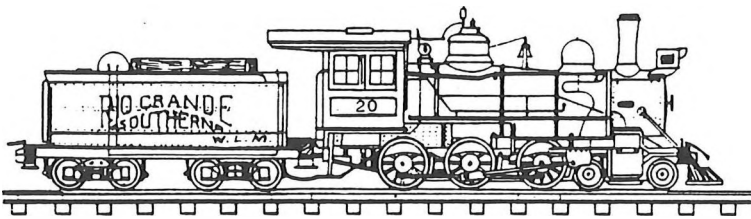


PRESERVATION FUND AND BOOK DRAWING

Support continues to be strong for the monthly book drawing which supports the Club's Preservation Fund. Out-of-state member, Gary Ellison of Pleasantville, NY, continues to send in his monthly chances and did very well at the February meeting. We bring this up to remind other out-of-state members that they too can participate by contacting chairman, Roger Callender, at 2573 So. Williams St., Denver, CO 80210.

Prizes and winners at the February meeting are as follows:

- Bob Fryml / The Cable Car in America
- Tom Caldwell / The Railroaders
- Frank Braisted / Golden Years of Trains, 1830-1920
- Lloyd Crews / Amtrak at Milepost 10
- Brian Bechtold / Roaring Fork RR Posters
- Gary Ellison,*
Pleasantville, NY / Set (3) of UP training manuals
- Sid White / Union Pacific Lantern
- Lloyd Crews / "Big Boy" (UP) Recording
- Chuck Gabel / Union Pacific Hat
- Chuck Morison / Kansas City Southern Belt Buckle
- Kevin Corwin / Pennsy Timetable
- Kim Fillips / Set (10) of lg. postcards
- John Hinds / Set (10) sm. postcards
- John Hinds / UP, 1988 Calendar



NO. 20 RESTORATION PROJECT

As reported in the February newsletter, the Club is undertaking some major work on the ex-Florence & Cripple Creek/ ex-Rio Grande Southern engine No. 20. Bill Gould, Equipment Chairman, and former President, Ed Gerlits, presented a fine slide and talk discussion to our Board of Directors about the badly needed work on the No. 20. Needed work would require almost \$35,000.00, but this would bring

the No. 20 considerably closer to a running condition. The Board has authorized about \$5,000 in immediate funds for the project. As much as \$11,000 may be spent in the next few months.

As a small, but fun fund-raising project, the Board authorized Erwin Chaim to purchase an HO n3 brass model of the No. 20 as it appeared on the RGS from Caboose Hobbies in Denver. Caboose, wishing to support the project, sold the engine to the Club below their cost. The engine is manufactured by Sunset Models, sells for about \$275.00 at full retail, is custom painted in RGS colors and custom lettered--READY-TO-RUN!!!

Chances are being offered at a cost of \$2 each or a sheet of 10 for \$18. If you would like to participate in this raffle and support the restoration of the No. 20, you may send your donation to: No. 20 Raffle, c/o Rocky Mountain Railroad Club, P. O. Box 2391, Denver, Colorado 80201. A coupon is provided for your ordering convenience.

ROCKY MOUNTAIN RAILROAD CLUB
No. 20 Raffle Order Form

Please enter _____ chances at \$2.00 each,
 or, _____ sheets (of ten chances) at \$18.00 each.

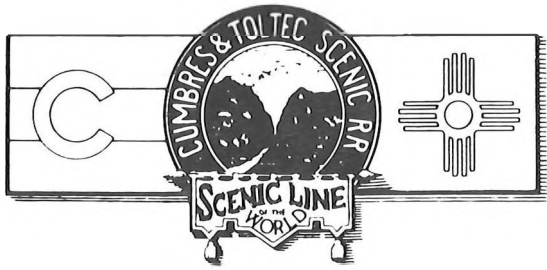
I enclose check or MO for: \$ _____

NAME _____

ADDRESS _____

TELEPHONE () _____

 Remember, too, Bill Gould's request for members holding parts to the No. 20 (as well as other equipment parts) to get in touch with him. Bill can be reached at 666-9809 or leave a message on the Club's telephone answering service at 431-4354.



NEWS FROM THE CUMBRES & TOLTEC SCENIC RR

Shop crews are hard at work on all of the C&TS's locomotives for the upcoming 1988 season. Boiler work seems to head up the number one item on most equipment, although running gear is also on the agenda. This year sees more workers and an earlier start. The Club's commitment to an early season doubleheader on June 23rd has much to do with the work schedule this year. The C&TS will have to have all four K-36s ready at the beginning of their 1988 season to provide our doubleheader. Knowing the dedication of the C&TS personnel, there is no doubt that all will be ready when the Club arrives for our special mixed-train excursion.

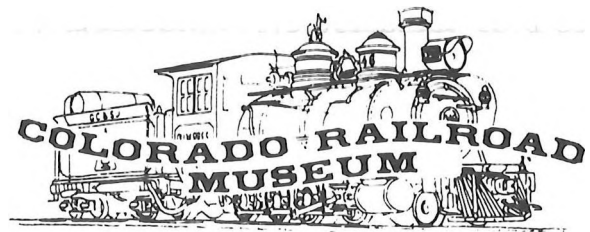
Of special note is the preparation of the C&TS to celebrate the 100th anniversary of Rotary Snow Ploy "OM". 1989 will mark the 100th birthday of "OM" and its the intention of the Cumbres & Toltec Scenic Railroad to run special snow-clearing operations in the winter of 1989. As details become known, the Rail Report will keep you informed. We know that it will take a great deal of work and funds will have to be obtained to pull this off.

Russ Fischer, Operations Manager, has advised that "OM" looks pretty good. Inspection of the flues reveals that the front sheet is in excellent condition and will require only a small amount of work. Considering the number of years since its last operation, as well as its age and use over the last 100 years, we are indeed blessed to have such a piece of equipment still in existence and in operational condition.

When the C&TS gets to the point of asking for donations for the 100th anniversary celebration, we hope that RMRRC members will be foremost in support of the project!

NEWSLETTER CONTRIBUTIONS

We are always happy to receive information about railroading in the Rocky Mountain region and, very often, as space permits, use other regional data. We encourage our members to participate in the newsletter. Should you have something you wish to share with fellow members, please send it to the attention of the editor, ROCKY MOUNTAIN RAIL REPORT, 502 South Cody Steet, Lakewood, Colorado 80226.



COLORADO RR MUSEUM'S NARROW GAUGE PASSENGER TRUCK PROJECT

Just a reminder! Last month we mentioned that the Museum has undertaken a project to place authentic narrow gauge passenger trucks under seven passenger cars at the Museum. The project is to be financed by tax-deductible donations to the newly established "Narrow Gauge Passenger Car Restoration Fund". Gifts of twenty or more dollars will be recognized by a Certificate of Appreciation, which is suitable for framing.

Should RMRRC members wish to donate funds to this project, they may send their gift to:

The Colorado Railroad Museum
Passenger Car Restoration Fund
P. O. Box 10
Golden, Colorado 80402

Why not mention that you are a member of the Rocky Mountain Railroad Club so that the Museum knows how much support it is receiving from Club members!!!



Heading westbound, we cross ex-Rio Grande bridge at MP 377.52 over the Navajo River. A water tank is also located at this point and is in relatively good condition. Photograph by Jim Trowbridge.



**GET READY FOR THE RMRRRC'S
SPECTACULAR WEEK OF "RAILROADIN'"
JUNE, 1988**

Chama...Monero...Lumberton...Dulce...Gato...

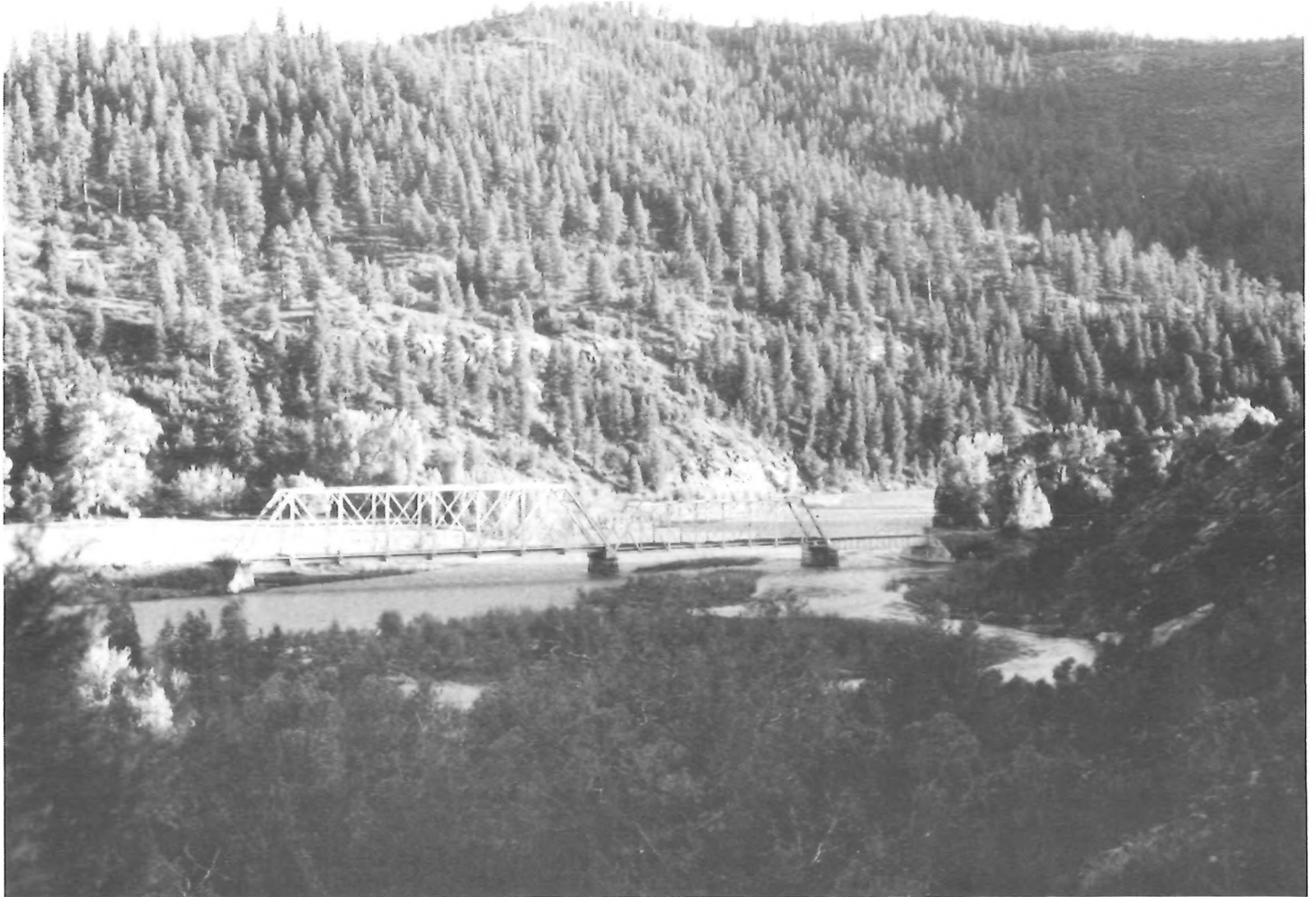
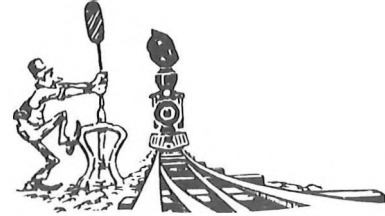
Carracas...Arboles...Allison...Ignacio...
Florida...Falfa...Durango!!!

Just a few of the names that fire the imagination and represent places we will visit on our Chama to Durango Field Trip on June 24th, the day inbetween the C&TS and D&SNG excursions.

Those attending the February meeting got a fine overview of this field trip through our program. Many others are aware of this area through photographs in the numerous books on the Rio Grande narrow gauge. But, if you haven't ever been over this part of the Rio Grande right-of-way, then this is the time to do so! If you are planning to participate and would like to get an over-

view of the area and feel for the narrow gauge operation of this area as well as the other areas to be covered during the June 26-July 2nd field trips, then you might want to pick up Colorado Memories of the Narrow Gauge, a Carstens publication, by John Krause and club member Ross Grenard and/or Requiem for the Narrow Gauge by Ross Grenard. Both of these books are soft cover, inexpensive and well done. They can be obtained at most hobby shops carrying books around the country. If you cannot obtain a copy where you live, your editor would suggest the Colorado Railroad

Museum, (303) 279-4591; Caboose Hobbies, (303) 777-6766; Trainmaster of Denver, (303) 371-8444; or High Country Brass (303) 368-9607.



A truly beautiful sight! This series of bridges, located across the Rio San Juan, is nestled in some particularly exciting country. We hope that the sun cooperates so those on the June 24th field trip can capture the radiance of the sun reflecting off the bridges and water. Jim Trowbridge photograph.



Gato! Also known as Pagosa Jct. for a number of years, a branch line leading to the right headed to Pagosa Springs into the 1930's and was primarily a logging line. Today, Gato is still a scene out of the past with most of the major structures remaining. At the extreme left we see the cut-stone pump house, then the water tank and, in the distance, the rail-road bridge and general store. A gondola also remains on the "house track". You will find this to be a delightful spot to visit and take pictures. Jim Trowbridge Photograph.

SWAP 'N SHOP

Personal ads are accepted from members for items to be listed for sale or trade or wanted. We cannot enter into any correspondence, nor will we appraise them.

WANTED: Original copy of Denver, South Park & Pacific. State condition and firm price. Bob Anderson, 821 Seventh St., West Des Moines, IA 50265.

FOR SALE: Gunnison Country, Wallace, 1960, \$16.00; Snow Shoe Itinerant, J. L. Dyer, 1975, \$8.50; Kynewisbok, Yearbook for 1946, \$20.00. A. F. von Blon, 1699 Ewing Ave.,

Waco, TX 76706.

WANTED: Information and/or help. Moffat Road Souvenir Fork was taken during a burglary at our house on January 15, 1988. Fork was about 5-7/8" long, sterling silver, "The Moffat Road Col" along the handle with a picture of a mountain and lake with inscription "Yankee Doodle Lake". Any information please contact the victim at (303) 936-0103, or Denver Police at (303) 575-3681, reference case 262864. Omar Quade, 2904 South Newton Street, Denver, Colorado 80236.

RMRRRC 50th ANNIVERSARY CALENDAR

1988 is here!!! Have you ordered your 1988 RMRRRC 50th Anniversary calendar? It's a very special commemorative souvenir of this special occasion. The 50th Anniversary calendar depicts memorable excursions on Colorado, South Dakota, New Mexico and Wyoming rail trips as recorded by seventeen separate Club members.

Over twenty-six black and white photographs on a large 14"x22" opened format capture a wide variety of passenger train operations undertaken over the years and include such operations as the Black Hills Central, Colorado & Southern, Denver & Intermountain, Denver & Rio Grande Western (both standard and narrow gauges), Great Western, Manitou & Pike's Peak (steam), Midland Terminal, Rio Grande Southern (steam and Galloping Goose) and the Union Pacific.

Cost of this calendar is just \$6.00 each, plus \$1.50 each for 1st class postage. You may obtain copies at regular Club meetings also. Since our December meeting, almost half of the 1000 calendars have been sold, so, don't delay. Get your copy today!

Proceeds from the sales of this calendar will benefit the Club's archives and equipment collections.

CALENDAR ORDER FORM

NAME _____

ADDRESS _____

Enclosed is a check or money order in the amount of \$ _____ for _____ copies of the RMRRRC 50th Anniversary calendar.

Send your orders to:

CALENDAR
Rocky Mountain Railroad Club
P. O. Box 2391
Denver, Colorado 80201

RMRRRC 50th ANNIVERSARY COMMEMORATIVE PLATE

The 50th Anniversary Committee has, with the permission of the Board, commissioned a commemorative Anniversary Plate to be produced. (See the January, 1988 issue of the Rail Report for a plate photograph). The 50th Anniversary is in blue with gold edging and the "50th" lettering on a cream-colored 9 3/4" plate. (Due to the special gold inlay, this is intended to be a decorative, rather than a utility piece). An order of 120 plates has been placed with and expected delivery date of February/March, 1988, just in time to celebrate the 50th Anniversary in April.

The cost of this plate is \$24.95 and includes postage and special mailing box. Orders may be sent to:

COMMEMORATIVE PLATE
Rocky Mountain Railroad Club
c/o Cyndi Trombly
4261 So. Richfield Way
Aurora, Colorado 80013

COMMEMORATIVE PLATE ORDER FORM

NAME _____

ADDRESS _____

Please send _____ plates @ \$24.95 each. I enclose \$ _____ in check or money order.

50th ANNIVERSARY BELT BUCKLE

The Club has commissioned a commemorative belt buckle using the 50th Anniversary Logo. (See January, 1988 issue of the Rail Report for buckle photograph). The buckles are in stock now and many of the 350 pieces have been sold, so, get your order in today! Orders may be sent to:

ROCKY MOUNTAIN RAILROAD CLUB

c/o Erwin Chaim
560 Emerson St.
Denver, Colorado 80218

BELT BUCKLE ORDER FORM

NAME _____

ADDRESS _____

Please send _____ buckles @ \$10.00 each
(\$8.00 plus \$2.00 1st class postage). I

enclose \$ _____ in check or money
order.



50th ANNIVERSARY BANQUET

The kickoff of the Club's 50th Anniversary celebration is the Banquet to be held at the Brown Palace Hotel on Saturday, April 16, 1988. The Board of Directors, in a desire to have as many members present as is possible, have decided to defray one third of the cost of the banquet (\$30.00) and thus charge only \$20.00 per person. Taking \$10.00 per person attending the Banquet from the treasury is certainly to your advantage to dine at one of Denver's most prestigious establishments, receive a free souvenir CABOOSE (in HO scale) and be entertained by outstanding photography of highlights of the past 50 years of the Rocky Mountain Railroad Club's existence.

Can you afford to miss this once-in-a-life-time event? Well, of course NOT! So why wait any longer. Get your reservations in today!!!

The cost, again, is just \$20.00 per person. It includes a truly fine meal, a great program, a free souvenir caboose, door prizes, the drawing of the winners of the annual book drawing, and, comradeship with fellow Club members.

The Social Hour begins at 6:00 p.m. with dinner at 7:00 p.m. A cash bar will be available during the evening.

ORDER FORM

50th Anniversary Banquet

NAME _____

ADDRESS _____

Phone Number _____

Number of Reservations @ \$20.00 _____

Amount enclosed \$ _____

Please remit to:

ROCKY MOUNTAIN RAILROAD CLUB
P. O. Box 2391
Denver, Colorado 80201

RIDE-SHARING

We would like to be able to offer rides to people who would prefer not to drive at night. Therefore, we are offering to arrange this through Erma Morison (333-3830). Sign up below if you are in need of a ride or if you are willing to give a ride to fellow RMRRC members.

[] I/We need a ride to the banquet, please arrange one for me/us.

[] I/We would be happy to offer a fellow club member in my neighborhood a ride.

BOOK & VIDEO REVIEWS

There has been so many new videos available this past year as well as books that it's hard to keep up. Space in the newsletter has also made it difficult to do as much as one would like to do. Your editor does think you might like to hear about some of these and so we will try to present a few each month for the next few months. Your editor has completely read through or watched through the following items and the reviews are strictly his opinion.

RIO GRANDE OF THE ROCKIES. WB Video Productions. 59 minutes. \$49.95. Address: 6447 S. Heritage Pl. W., Englewood, CO 80111. (303) 770-8421

This is an outstanding video of particular interest to RMRRC members as it is the product of the Club's Irv August films collection. Approximately half of the tape covers the Rio Grande standard gauge over Tennessee Pass in the early 1950's showing freight and passenger being pulled by the Grande's mallets, class L-131, 132 or L105, or pushing as mid-train or rear-end helpers. Scenes of early diesel power is also shown with their beautiful paint schemes. If big steam is your bag, then this tape is for you, especially since very little Rio Grande standard gauge is available.

The balance of the tape covers the narrow gauge in the early 50's with a complete Monarch Branch turn, coverage of the last train over Marshall Pass and a side-trip to Crested Butte showing flanger operation in very deep drifts of snow! C-16 fans will particularly enjoy a relatively long section on the 268 in "bumblebee" paint as it switches in Gunnison after picking up the last rolling stock before abandonment of the Gunnison Line.

This is a typical WB production--excellent quality and fantastic sound-synchronization. Irv August narrates, much to the pleasure of his friends in the Club. Some nice personal reminiscences add a great touch to the tape.

THE SAN JUAN FREIGHT SPECIAL. Madame Woo Video. Approximately 60 minutes. \$39.95. Address: 2257 East 3205 South, Salt Lake

City, Utah 84109.

A strange name for railroad video, but nothing strange about the quality of the tape. [Editor's note: I must preface this review by stating that this tape covers my San Juan Express Excursion of 1987] While I have seen other video of these private excursions, this one is extremely well done, not just covering the many photo runbys, but telling something of a story about the trip as well as the regular trains on the C&TS without boring the viewer with too much narration. Over 40 runbys were accomplished on August 29 & 30, 1987 between the special train and the regular trains. Dale Angell and Mike Niederhauser did an outstanding job of photographing the runbys and editing them into a continuous story of the two days of railroading. The video was done on commercial tape so the reproduction quality is outstanding and the shots are dramatic and well edited. If the sights and sound of a twelve-car freight train behind a K-36, traversing some of the world's greatest scenery is to your liking, then check this video tape out! The photo-runbys cover the whole C&TS line as the trip covered Chama to Antonito the first day and the reverse the second day.

UPDATE ON ROLLINS PASS RESTORATION

The official opening of the Needle's Eye Tunnel is tentatively set for July 3, 1988. The Rollins Pass Road will be opened as soon as Gilpin County can clear the road of snow sometime this spring.

So, what's next? The Forest Service is to install a parking lot above the Needle's Eye Tunnel so visitors can park and walk to the Devil's Slide Trestles. Hand rails will be installed for safety on the trestles. The Old Boulder Wagon Road will be used to bypass the trestles by vehicles. But, this road will be classed as 4-wheel. Water-bars and pullouts will be installed and it will still require high clearance on any vehicle to go across the top. So, two-wheel drive vehicles can go up and through the tunnel from the east side, and up to Corona from the west side. (Rollins Pass Restoration Association)



D&RGW SKI TRAIN EXCURSION

On Saturday, March 26, 1988, the Rocky Mountain Railroad Club has chartered a parlor car on the all new D&RGW Ski Train. The \$48 fare includes roundtrip railfare aboard our specially chartered parlor car, a warm buffet breakfast enroute to Winter Park, a chartered bus to Tabernash (for photographing the Ski Train), and a railroad program in the afternoon in our own reserved meeting room. Come join us for a superb trip aboard the newly re-equipped Ski Train. Please use the order form provided in this newsletter and send to: ROCKY MOUNTAIN RAILROAD CLUB, c/o Mat Anderson, 1117 So. Clayton St., Denver, Colorado 80210. Please include a stamped, self-addressed envelope.

NAME _____

ADDRESS _____
Street

City _____ Zip _____

Telephone() _____

PLEASE NOTE: For the comfort of all passengers, smoking will NOT be permitted aboard our chartered car. Thank You.

Please send _____ tickets @ \$48 per person.

I enclose \$ _____ in check or money order. (\$48 fare includes roundtrip rail fare, bus charter and movie)

SKI TRAIN CARS

No.	Name	Car Type	Cap.
420	North Park	Cafe/Lounge	50

421	Winter Park	Cafe/Lounge	50
425	Colorado Springs	Parlor/Club	39
426	Glenwood Springs	Parlor/Club	39
427	Idaho Springs	Parlor/Club	39
430	La Plata Peak	Coach	66
431	Pikes Peak	Coach	66
432	Pyramid Peak	Coach	66
433	Shavano Peak	Coach	66
440	Mount Bierstadt	Coach	72
441	Mount Elbert	Coach	80
442	Mount Evans	Coach	80
443	Mount Massive	Coach	80
444	Mount Princeton	Coach	82
Total			775

THE ROARING FORK RAILROAD — DERAILED BY THE D&RGW?

The Roaring Fork Railroad closed its doors on Tuesday, January 26, 1988. Apparently the Roaring Fork was unable to reach any terms on schedules or cost of D&RGW engines and crews. Blame for the impasse by made directly against W. J. Holtman, president of the D&RGW by John Parten, President of the Roaring Fork RR. Mr. Parten said, "He's (meaning Holtman) decided that there are going to be no more passengers' services, at any price." "Until the Rio Grande gets better management, we don't have any choice but to leave Colorado."

The Roaring Fork's sister company, the Denver Railway Car Co., may stay in Denver to refurbish passenger cars. Definite plans may be announced at the end of February. (Denver Post)

PRIVATE TRAIN TRIPS AVAILABLE IN 1988

It's a busy year in the Rocky Mountain Railroad Club this year with all the trips planned, but there are also some rather interesting private trips as well. Here are a few to consider and we will list others as we hear about them.

Club member, John Boehner, 5036 Sagebrush, Cheyenne, WY 82009, (307) 638-8368, is involved in a special excursion into East Germany in late July. There will be a great deal of steam during this trip and the consists will be made up of PULLMAN cars--all special. A flyer is available by writing to John. The price appears to

be based on Swiss Franks is is SFr. 1,750, which includes 3 nights at the World class Hotel Merkur in Leipzig. All meals are included except beverages.

Club member, Ed Gerlits, will be running his Animas Cañon Express on September 24, 1988. Flyers will be available about May 1st, but no reservations will be accepted prior to that date. Cost this year will be \$60.00 and includes lunch, snacks and beverages enroute to and from Silverton aboard Ed's private train on the Durango & Silverton Narrow Gauge RR. Photo runbys are also included. Contact Ed at 1540 Routh St., Lakewood, CO 80215.

Club member (and ye olde editor), Jim Trowbridge, will again run a San Juan Express on the Cumbres & Toltec Scenic RR, on Saturday and Sunday, September 3 & 4, 1988. A mixed freight train with movie passenger equipment on the end will traverse the route of the C&TS between Chama and Antonito for two days of up to 40 photorunbys. The price of \$350.00 per person includes train fare and lunch, snacks and beverages for both days. In conjunction with The San Juan Express, a Silverton Express, sponsored by John Vivian of Burbank, CA is scheduled on Monday, September 5, 1988, consisting of the private car "NOMAD" and an open gondola on the 9:30 a.m. Silverton train of the Durango & Silverton NG RR. Price for this trip is \$65. This pair of trips is limited to just 50 people! Contact Jim Trowbridge for flyers at: 502 So. Cody Street, Lakewood, CO 80226. (303) 988-2267.

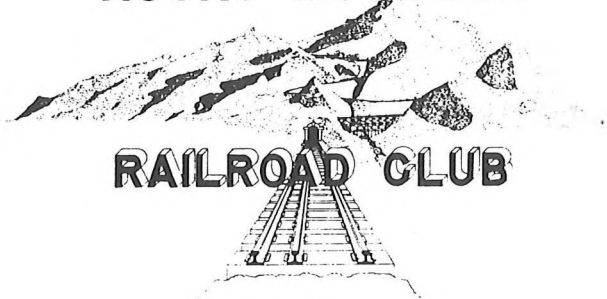
MISCELLANEOUS

COORS ON WHEELS. Adolph Coors Co. has had Union Tank Car (UTLX) custom build an undisclosed number of 20,000-gallon "sandwich" tank cars, which look like conventional cars, to carry Coors beer by rail between the brewery in Golden, Colorado and Elkton, Virginia, a distance of 1,685 miles. The "sandwich" consists of a layer of foam insulation between an inner lining of stainless steel and an outer shell of ordinary painted steel. (The Fast Mail) via Carl E. C. Carlson.

UNION PACIFIC TO MOVE "BIG BOY". It was planned to orchestrate one of the most difficult and unusual moving projects involving railroad equipment in January when the Union Pacific's "Big Boy" steam locomotive No. 4023, the largest steamer ever built, will be moved from the display site at the Omaha Shops where it has rested since 1975. The engine, which cannot operate under its own power, is being moved to prepare it for public display at the new John C. Kenefick Locomotive Park on Abbott Drive, near the Omaha Shops. There, the Big Boy will be joined by a Union Pacific "Centennial" diesel-electric locomotive, also the largest of its type ever built. (UP News Release) via Carl Carlson.

RAILROAD FOR RENT. The National Railroaders Museum is offering to rent a 1918 Pennsy RR K-4 steam locomotive for \$4,500 a day plus expenses. The 96-foot locomotive was recently test run out of Altoona.

ROCKY MOUNTAIN



RAILROAD CLUB

BOX 2391

DENVER, COLORADO 80201

FIRST CLASS MAIL
U. S. Postage
PAID
Denver, Colorado
Permit No. 1873

First Class Mail