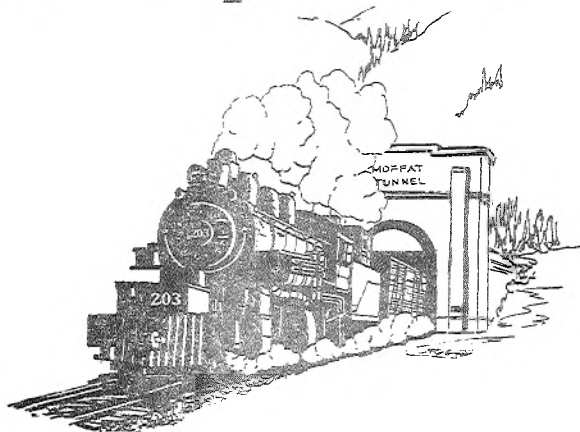


Rocky Mountain Rail Report



The Rocky Mountain Railroad Club

OCTOBER 1969

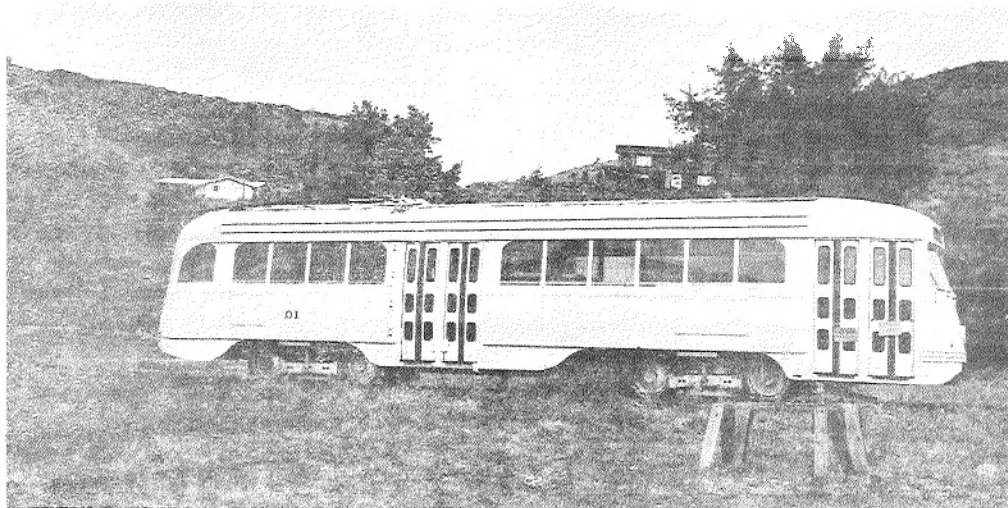
No. 121

CURRENT NEWS AND HISTORICAL NOTES OF
ROCKY MOUNTAIN RAILROADING PUBLISHED
MONTHLY FOR ITS MEMBERS BY THE ROCKY
MOUNTAIN RAILROAD CLUB

EDITOR - - - - - ED SCHNEIDER

MEETING NOTICE: DATE WEDNESDAY, OCTOBER 8, 1969
TIME 8:00 P.M.
PLACE WESTERN FEDERAL SAVINGS BLDG., (LOWER LEVEL MEETING ROOM),
17TH & CALIFORNIA STS., DENVER

PROGRAM NOTES: OUR OCTOBER MEETING WILL FEATURE "OTTO'S POTPOURRI". IT'S BEEN A LONG TIME SINCE THE CLUB HAS SEEN ANY OF OTTO PERRY'S FINE FILMS, BUT HE WILL BRING SOME OF THEM TO OUR OCTOBER MEETING. CLUB MEMBERS WHO HAVE SEEN OTTO'S FILMS KNOW THEY ARE IN FOR AN ENJOYABLE EVENING. NEWER CLUB MEMBERS WHO HAVE NOT SEEN THESE FINE FILMS ARE IN FOR A REAL TREAT.



R. H. Kindig photo.

Here is the Rocky Mountain Railroad Club's latest acquisition, Los Angeles Railway P. C. C. street car 3101. Built in 1943 and later moved to Cripple Creek, Colorado, by a private individual, the car was recently purchased by the Club and moved to the Colorado Railroad Museum at Golden, Colorado. It is planned to repaint the car (now a sort of "Robin's-egg-blue") into its Los Angeles colors of orange, green and white. Its 3½-foot gauge was the same as the former Denver street car lines. While actual operation is not planned at present, it is not inconceivable that in the future this street car may again move under its own electric power.

* * * * *

ROCKY MOUNTAIN RAILROAD CLUB DAY ON THE COLORADO CENTRAL NARROW GAUGE RAILROAD. ON SUNDAY, OCTOBER 19, 1969, THE COLORADO CENTRAL NARROW GAUGE RAILROAD AT CENTRAL CITY WILL BE IN OPERATION FOR MEMBERS OF THE ROCKY MOUNTAIN RAILROAD CLUB. SEND IN \$2.00 TO THE CLUB AT

Post Office Box 2391 and receive by return mail a Colorado Central Railroad Pass which will entitle you to ride the railroad as often as you wish between the hours of 10:00 A.M. and 5:00 P.M. on October 19 only. Kids five and under ride free. All others must have one of the \$2.00 passes. Photo runbys will be made at various times during the day for the benefit of photographers and recorders. Your officers would appreciate having a good turnout at this event. Come along and bring a friend.

* * * * *

AIR TRAVELERS SPILL OVER ONTO THE RAILS is the title of a recent column by Paul Harvey.

"THE BEST POSSIBLE NEWS FOR AIR TRAVELERS IS EVIDENCE OF A RENAISSANCE OF THE RAILROADS. OVERCROWDED AIR CARRIERS DEMAND RELIEF; OVERCROWDED AIRPORTS FORCE CURTAILMENT OF SCHEDULES.

"Now, with a traffic jam upstairs, a resumption of interest in rail passenger service is coming along just in time.

"THE PROBLEMS OF AIR TRAVEL WILL GET WORSE BEFORE THIS RELIEF CAN BE FELT. AIRLINES, WITH MORE PASSENGERS THAN THEY CAN HANDLE, MAY GET ALTOGETHER AS IMPERSONAL, UNRELIABLE AND RUDE AS DID THE RAILROADS WHEN THEY DID NOT WANT PASSENGERS.

"INDEED, THE NEXT ERA OF 'LUXURY TRANSPORTATION' MAY BE ON THE GROUND.

"COMMERCIAL TRAVELERS ARE LEARNING THAT 'PREDICTABILITY' IS MORE IMPORTANT THAN 'SPEED'.

"THE NEW TURBOTRAIN BETWEEN MONTREAL AND TORONTO IS TYPICAL OF THE NEW GENERATION OF RAIL TRAVEL, AND THIS ONE IS ALREADY IN OPERATION. IT AVERAGES 84 MILES AN HOUR AND, WHEN THE ROAD-BED IS IMPROVED AND MANY GRADE CROSSINGS ELIMINATED, IT WILL AVERAGE MORE THAN 100 MILES AN HOUR.

"SIMILAR TRAINS ARE PRESENTLY UNDER CONSTRUCTION FOR THE BOSTON-NEW YORK RUN AND, LATER, BETWEEN BOSTON AND WASHINGTON.

"BETWEEN CHICAGO AND CARBONCALE, 307 MILES DOWNSTATE, THE ILLINOIS CENTRAL CONTEMPLATES A HIGH-SPEED (170 MPH) TRAIN. WITH STOPS, THE RUN COULD BE MADE IN THREE HOURS.

"COUNTING THE TIME TO AND FROM AIRPORTS - AND STACKED UP OVER AIRPORTS - THAT TIME BEATS MOST PRESENT JET PLANE SCHEDULES!

"BUT AGAIN, SPEED IS LESS IMPORTANT THAN PREDICTABILITY. TIME WAS WHEN YOU COULD SET YOUR WATCH BY THE DAILY WHISTLE OF THE 5:15; HOPEFULLY THAT TIME MAY COME AGAIN.

"TRAINS HAVE MANY ADVANTAGES WITH WHICH PLANES CANNOT COMPETE: SPACIOUSNESS, COMFORT, SCENERY; THEY RUN IN ALL KINDS OF WEATHER AND THEY ARE SAFER. THE 1968 RAIL FATALITY RATE OF .10 PER 100 MILLION PASSENGER MILES IS 24 TIMES BETTER THAN PRIVATE CARS AND THREE TIMES BETTER THAN SCHEDULED AIRLINES.

"RUSSIA WILL HAVE A 120-MPH ELECTRICALLY POWERED TRAIN IN SERVICE NEXT YEAR. JAPANESE TECHNOLOGISTS AT MEIJA UNIVERSITY ARE WORKING ON MODELS OF A TRAIN THEY PREDICT WILL AFFORD SURFACE TRANSPORTATION AT SONIC SPEEDS - 600 MPH.

"IN EUROPE YOU CAN DRIVE YOUR CAR ABOARD SOME TRAINS AND RIDE IN IT IF YOU PREFER. YOU CAN GO FROM THE ARCTIC CIRCLE TO WITHIN SIGHT OF AFRICA ON EUROPEAN TRAINS, MOST LINES BEING MODERN, CLEAN, COMFORTABLE AND FAST.

"ADMITTEDLY, EUROPE'S NATIONALIZED RAILROADS OPERATE AT A DEFICIT. THUS VIRTUALLY NO TAXES ARE PAID BY EUROPEAN RAILROADS TO THEIR RESPECTIVE GOVERNMENTS.

"OUR OWN RAILROADS CANNOT BE EXPECTED TO POUR HUNDREDS OF MILLIONS OF DOLLARS THEY DON'T HAVE INTO NEW EQUIPMENT IN AN EFFORT TO RE-ESTABLISH A KIND OF DE LUXE SERVICE WHICH WAS PHASED OUT 20 YEARS AGO.

"THE ASSN. OF AMERICAN RAILROADS HAS PROPOSED THAT THE FEDERAL GOVERNMENT PAY THE COST OF OPERATING MONEY-LOSING PASSENGER TRAINS. SURELY THE RAILROADS ARE AT LEAST AS ENTITLED AS ARE THEIR COMPETITORS TO AN ASSIST FROM THE PUBLIC TREASURY.

"IRONICALLY, PART OF THE TAXES PAID BY RAILROADS GO TO HELP BUILD AIRPORTS AND TO HELP PAVE HIGHWAYS, BUT THE RAILROADS GOT NO HELP IN UPGRADING AND MODERNIZING RAIL TRACT AND ROADBEDS.

"ANYWAY, NOTHING CAN HOLD BACK THE DAWN. ONE WAY OR ANOTHER A RENAISSANCE OF RAIL PASSENGER SERVICE IS INEVITABLE, IF ONLY BECAUSE OF THE SPILLOVER FROM THE AIRLINES, THE FALLOUT FROM AN OVERCROWDED SKY."

* * * * *

ANNUAL DINNER TRIP TO EVANS ON SEPTEMBER 13TH BEHIND UNION PACIFIC STEAM LOCOMOTIVE 8444 WAS CONSIDERED AN OVERWHELMING SUCCESS. THERE WERE OVER 375 PASSENGERS ON THE TRAIN RIDE OVER THE DENT BRAND TO EVANS AND RETURNING VIA THE MAIN LINE TO DENVER.

UPON ARRIVAL IN EVANS IT WAS NECESSARY THAT WE WALK ABOUT 4 BLOCKS TO THE RAMADA INN. THE COLORADO STATE HIGHWAY PATROL AS WELL AS THE EVANS POLICE MUST BE PRAISED FOR THEIR CAREFUL HANDLING OF OUR GROUP. EVERYTHING, INCLUDING THE BUS PROVIDED FOR BY THE TOWN OF EVANS, WORKED OUT TO OUR SATISFACTION. ONE COMMENT WAS OVERHEARD WHILE OUR LARGE GROUP WAS SEEN WALKING TO THE RAMADA, "LOOKS LIKE MOSES LEADING THE CHILDREN OF ISRAEL TO THE PROMISED LAND."

RON PARKHURST OF DENVER CERTAINLY DID A FINE JOB ON HIS PART OF THE PROGRAM. WE ALL BELIEVE THAT IT WAS THE MOST OUTSTANDING TAPE-SLIDE PRESENTATION EVER SHOWN AT A CLUB FUNCTION.

THE BIGGEST DISAPPOINTMENT, HOWEVER, WAS THE DINNER ITSELF. THE RAMADA CERTAINLY HAS A "BLACK-EYE" WITH US ON THEIR "DIME-STORE" PORTIONS OF THE FOOD. FROM TALKING WITH SEVERAL OF THOSE ON BOARD LATER ON IT WAS BELIEVED THAT OF THE 368 SERVED THAT NIGHT, 368 MUST HAVE GONE HOME AND HAD A MID-NIGHT SNACK. TO OFF-SET THE DINNER WAS THE FINE PERFORMANCE OF ENGINE 8444, OF WHICH EVERYONE THOROUGHLY ENJOYED, AND THE PROGRAM. ALL IN ALL IT WAS A WONDERFUL EVENING, THE OFFICERS OF THE CLUB WERE MORE THAN DELIGHTED TO SEE SUCH A TURN-OUT OF CLUB MEMBERS, MANY OF WHOM WE HAVE NOT SEEN FOR QUITE SOME TIME. ALSO ON HAND WERE A WELL REPRESENTATIVE GROUP OF OFFICERS AND MEMBERS OF OTHER RAILROAD AFFILIATED ORGANIZATIONS IN THE DENVER AREA.

* * * * *

BURLINGTON PASSENGER TRAIN SERVICE BETWEEN LINCOLN, NEBRASKA AND BILLINGS, MONTANA WAS DISCONTINUED DURING THE LATE PART OF AUGUST DESPITE UNION PROTESTS AND AN ATTEMPT FOR ANOTHER INJUNCTION.

OTHER PASSENGER TRAINS IN THE ROCKY MOUNTAIN AREA PENDING DECISIONS ARE:

- SANTA FE'S ----- DENVER TO LAJUNTA SERVICE
- RIO GRANDE'S --- CALIFORNIA ZEPHYR BETWEEN DENVER AND SALT LAKE CITY
- UNION PACIFIC'S- No.'s 5 AND 6 BETWEEN OMAHA AND LOS ANGELES

DECISIONS ON THESE TRAINS SHOULD BE MADE IN THE NEXT MONTH OR SO.

* * * * *

RIO GRANDE NARROW GAUGE HAS BEEN GRANTED THE FORMAL ICC DECISION PERMITTING ITS ABANDONMENT OF THE ANTONITO-FARMINGTON SEGMENT. NOTHING HAS BEEN DONE TO PRESENT DATE, PENDING A REVIEW OF BOTH COLORADO AND NEW MEXICO STATE OFFICIALS, AS WELL AS THE NATIONAL PARKS SERVICE. IT COULD NO DOUBT INVOLVE A CONSIDERABLE AMOUNT OF TIME BEFORE ANY FINAL DECISION IS MADE.

* * * * *

RAILROAD JEWELRY - - - - - THE CLUB HAS QUITE A NICE ASSORTMENT OF ATTRACTIVE JEWELRY IN OUR GENERAL STORE THAT SHOULD DELIGHT MOST ANY RAIL-FAN, AND WOULD ALSO MAKE HANDSOME GIFTS. WITH THE CHRISTMAS HOLIDAY NOT TOO FAR OFF PERHAPS SOME OF OUR READERS WOULD LIKE TO ORDER EARLY. WE PLAN TO SEND OUT IN THE NEWSLETTER NEXT MONTH A MORE COMPLETE LIST, HOWEVER WILL LIST SOME OF THE ITEMS HERE. THESE ARE VERY ATTRACTIVE, HAVING A DESIGN OF THE FIRST RIO GRANDE LOCOMOTIVE, MONTEZUMA, ALL ARE HEAVY AND DURABLE QUALITY.

- TIE TACKS - - - - - @ \$ 1.50 EACH
- TIE BARS - - - - - @ \$ 1.50 EACH
- KEY CHAINS - - - - - @ \$ 1.50 EACH
- BOLO TIES - - - - - @ \$ 1.50 EACH
- EAR RINGS - - - - - @ \$ 2.00 PAIR
- CUFF LINKS - - - - - @ \$ 2.00 PAIR

* * * * *

SOUTHERN COLORADO NARROW GAUGE MEMORIES 1969 -- PRICE \$2.50, SIZE 8½" x 11", OFFSET RPINTING, SOFT COVER AND LOOSE-BOUND WITH CORD. THIS 14 PAGE BOOKLET WAS RECENTLY ISSUED BY THE KIWANIS CLUB OF ALAMOSA, COLORADO. IT CONTAINS 14 PHOTOGRAPHIC REPRODUCTIONS AND 3 PAGES OF TEXT

AND HAS BEEN ADVERTIZED AS A COLLECTION OF JOHN L. HAKE'S PHOTOGRAPHS. NO DOUBT SOME OF THE PHOTOS WERE TAKEN BY MR. HAKE BUT YOUR REVIEWER RECOGNIZED TWO OF BOB RICHARDSON'S EXCELLENT PICTURES AND TWO FROM THE WELL-KNOWN LIVELY COLLECTION SHOWING EARLY DAY OPERATION OF THE ROTARY ON CUMBRES PASS. ALL PHOTOS WERE MADE ALONG THE D&RGW NARROW GAUGE WITH THE EXCEPTION OF ONE SHOWING TWO OF THE RIO GRANDE SOUTHERN'S GEESE AT TROUT LAKE TANK. THE SINGLE LINE CAPTIONS ARE NOT VERY INFORMATIVE. FOR EXAMPLE, RICHARDSON'S PHOTO OF ONE OF THE 300 SERIES ROUNDING A CURVE IN BLACK CANYON WITH CHIPETA FALLS IN THE BACKGROUND IS ENTITLED "MOUNTAIN RAILROADING IN ALL ITS BEAUTY". ALTHOUGH THE PHOTOS AND THEIR REPRODUCTION ARE VERY GOOD, YOUR REVIEWER FEELS THE PRICE IS HIGH FOR THE SIZE OF THIS BOOKLET. IT IS HOPED THAT IF THE KIWANIS CLUB OF ALAMOSA ISSUES A SECOND BOOKLET OF THIS TYPE THEY WILL BE A LITTLE MORE GENEROUS IN THEIR PAGE COUNT.

- - - - E. J. HALEY

* * * * *

SWAP 'N SHOP

"WOULD AN RMRR CLUB MEMBER SHARE HISTORY OF GOLD HILL WITH ME? WOULD LIKE TO PURCHASE A COPY OF "RAILS AROUND GOLD HILL", BY MORRIS CAFKY!"

GEORGE E. BROWN, JR.
183 W. POWERS AVE., #207, LITTLETON, COLO. 80120
798-9875

* * * * *

THOT FOR THE DAY I LIKE TO SEE A MAN PROUD OF THE PLACE IN WHICH HE LIVES. I LIKE TO SEE A MAN WHO LIVES IN IT SO THAT HIS PLACE WILL BE PROUD OF HIM.

- - ABRAHAM LINCOLN

* * * * *

J. L. EHERNBERGER, PRESIDENT
CARL E. C. CARLSON, VICE PRESIDENT

R. A. CORDILL, SECRETARY
ANE O. CLINT, TREASURER